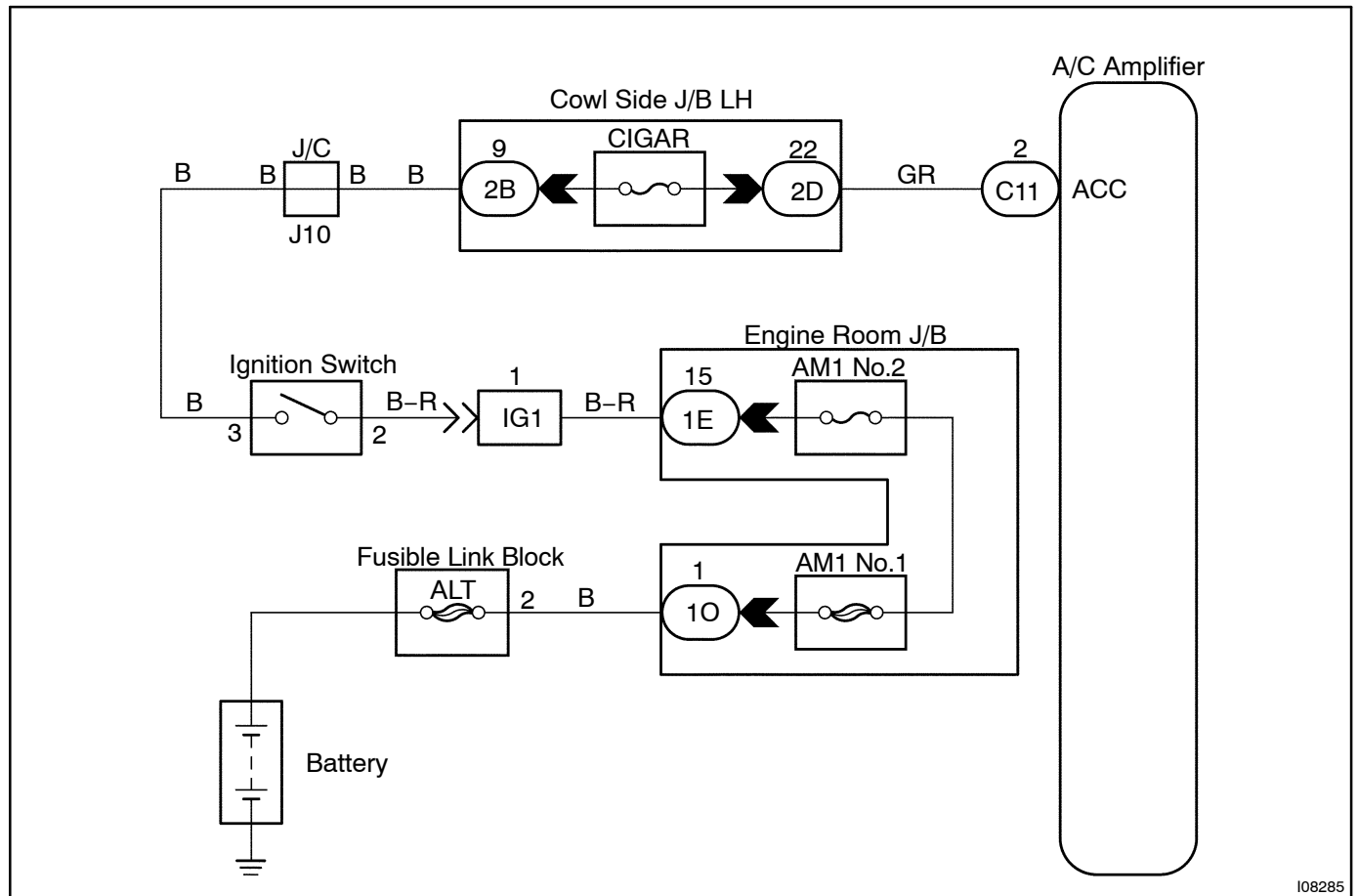


ACC Power Source Circuit

CIRCUIT DESCRIPTION

This is the power source for A/C amplifier and servomotors, etc.

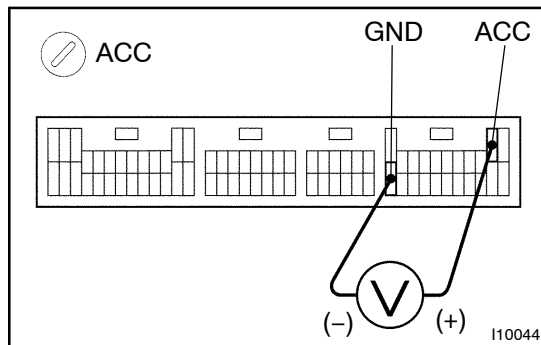
WIRING DIAGRAM



108285

INSPECTION PROCEDURE

1	Check voltage between terminals ACC and GND of A/C amplifier connector.
---	--

**PREPARATION:**

Remove A/C amplifier with connectors still connected.

CHECK:

- (a) Turn ignition switch to ACC.
- (b) Measure voltage between terminals ACC and GND of A/C amplifier.

OK:

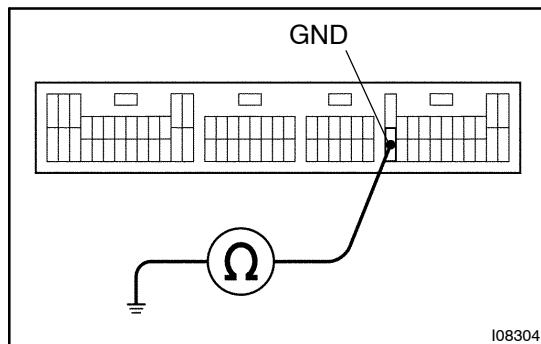
Voltage : Battery positive voltage

OK

Proceed to next circuit inspection shown on problem symptoms table (See page [DI-777](#)).

NG

2	Check continuity between terminal GND of A/C amplifier and body ground.
---	--

**CHECK:**

Measure resistance between terminal GND of A/C amplifier and body ground.

OK:

Resistance : 0 Ω (continuity)

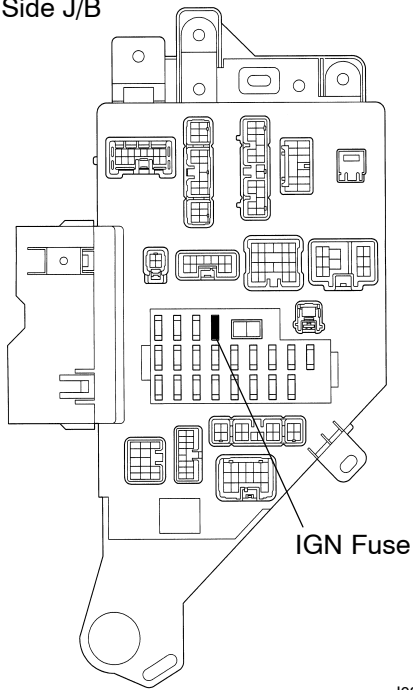
NG

Repair or replace harness or connector.

OK

3**Check IGN fuse.**

Cowl Side J/B

**PREPARATION:**

Remove IGN fuse from cowl side J/B.

CHECK:

Check continuity of IGN fuse.

OK:**Continuity****NG****Check for short in all the harness and components connected to the IGN fuse (See attached wiring diagram).****OK****Check and repair harness and connector between A/C amplifier.**